

Genetic Counseling for Aortic Disease: What the Surgeon Needs to Know

Stephanie Wallace, MS, CGC

McGovern Medical School

University of Texas Health Science Center at Houston

John Ritter Research Program

Nothing to Disclose



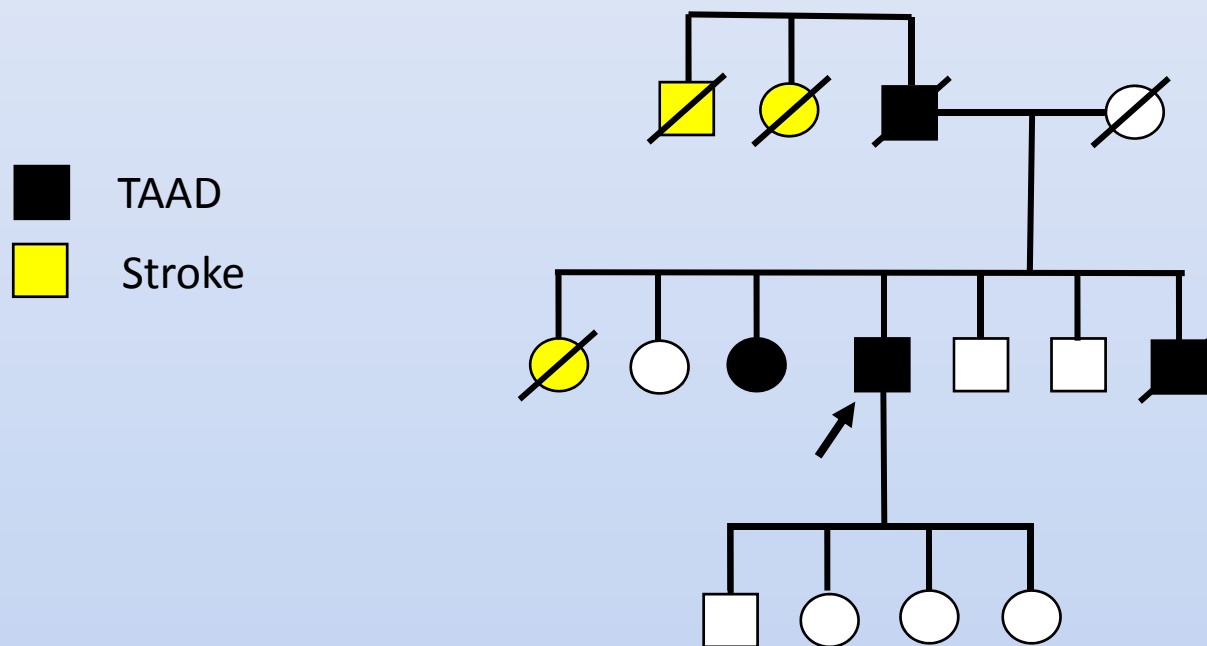
UTHealth[®]

**The University of Texas
Health Science Center at Houston**

**McGovern
Medical School**

Genetics: Why is it important?

Patient: 44 year old with history of a Type A dissection at 36. In hospital for a TAAA repair. History of scoliosis, pectus excavatum and arachnodactyly.



Genetic Counseling for Aortic Disease

- Indications for Genetic Testing
- Information Required for Risk Assessment
- Peri-mortem/Post-mortem Testing

Indications for Genetic Testing

- Features of a possible genetic syndrome (eye, skeletal, joint, other arterial dissections/aneurysms)
- Early onset dissection: <50 years (Stanford Type A or B), including pregnancy
- Family history of aortic disease, arterial dissections and/or sudden cardiac death



Marfan Syndrome



Loeys-Dietz-Syndrome



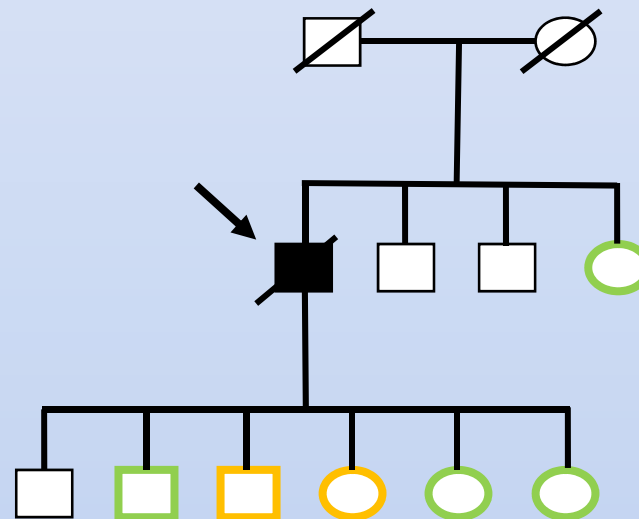
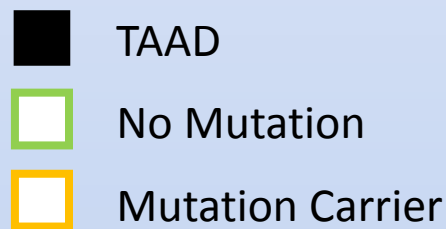
Vascular Ehlers-Danlos Syndrome

Information Required for Risk Assessment

- Aortic Dimensions Prior to Surgery
 - Allows for accurate screening/surgical recommendations in family members
 - Assists with interpretation of genetic testing results.

Peri-Mortem/Post-Mortem Testing

- Why is it important?
 - Genetic testing is most effective when an affected person is tested.
 - Provides information for screening family members



Hurdles to Peri-Mortem/Post-Mortem Genetic Testing

- Collecting a Sample
 - Ideal to collect blood sample pre-operatively or 3+ days after surgery
- Informed Consent
 - Signed consent from next of kin required
 - Disclosure of results and follow up
- Insurance Coverage

How to Access Genetic Services

- Genetics clinics can often facilitate testing for your patients and their families
- Marfan.org clinical directory

Texas

Texas Children's Hospital
Cardiovascular Genetics Clinic
Genetic Aorta Disorders
6621 Fannin Street
Houston, TX 77030

Medical Director:
Shaine A. Morris, MD, MPH

University of Texas Physicians
Medical Genetics and Multidisciplinary Aortic
and Vascular Disease Clinic
6410 Fannin Street, Suite 600
Houston, TX 77030

Medical Director:
Dianna M. Milewicz, MD, PhD*

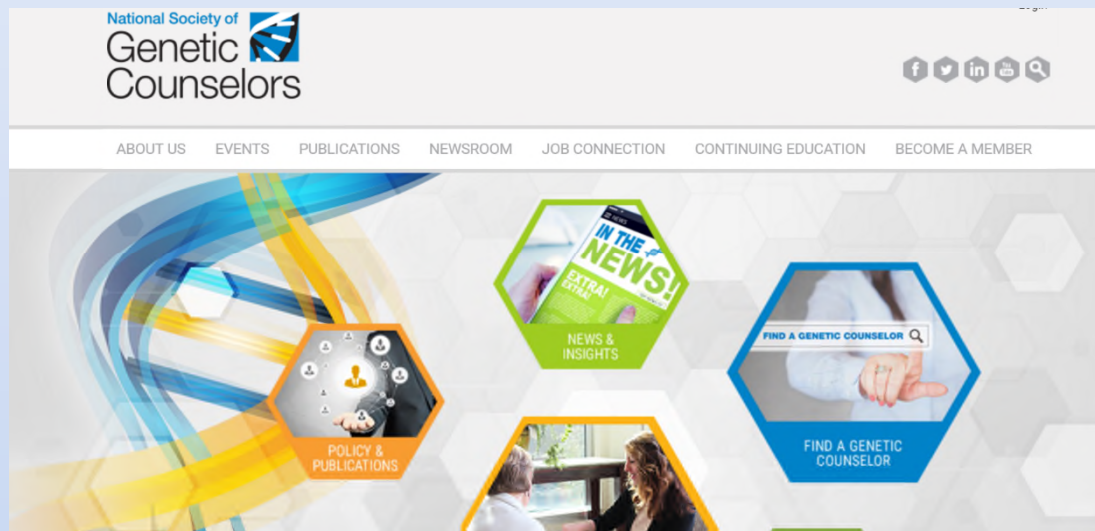
Contact:
Andi Lewis, CGC
Phone: 832-822-1723
Email: amlewis@bcm.edu
Appointments: 832-82-HEART (43278)

Contact:
Stephanie Wallace, MS, CGC
Phone: 713-500-7072
Email: Stephanie.E.Wallace@uth.tmc.edu

* Member, The Marfan Foundation Professional Advisory Board

How to Access Genetic Services

- National Society of Genetic Counselors: Find a Genetic Counselor: nsgc.org



- If no options for a genetics professional, consider ordering testing

Acknowledgements

Hazim Safi, MD

Anthony Estrera, MD

Dianna Milewicz, MD, PhD

Ellen Regalado, MS, CGC

Ginger Tsai, MS, CGC

Siddharth Prakash, MD, PhD

Shaine Morris, MD, MPH